



[www.tgpsystems.com](http://www.tgpsystems.com)



Glass Channel Systems



[www.tgpsystems.com](http://www.tgpsystems.com)



TGP Railing Systems are available in 3 types; railing combined with glass, railing with horizontal elements and finally railing with cylindrical profiles. Now, we have a new design of glass support system (TGS) which are preferable by architects especially for swimming pools, balconies and stairs with high architectural requirements.

TGP Glass Channel Systems (TGS) offers 2 different basic types; on-floor and in-floor. It can be placed on the final floor or on a parapet with glass of 10 to 20 mm thickness.

Thanks to different dimension of bases (15cm, 20cm and 30 cm), system will have maximum stability with 120 cm glass height and glass of 20 mm thickness.

TGS offer the feeling of freedom thanks to only glass non-barrier railing system.



## Type A

### Type A

- On Floor glass supporting system
- Glass of 20 mm thickness is available.
- Adjustment of the glass positioning
- Easy to assemble

Code	Dimension	Weight	Description
GC-A0-15-0	86X110	1,66 kg/pcs	max.20 mm glass
GC-A0-20-0	86X110	2,40 kg/pcs	max.20 mm glass
GC-A0-30-0	86X110	3,32 kg/pcs	max.20 mm glass

### Installation steps



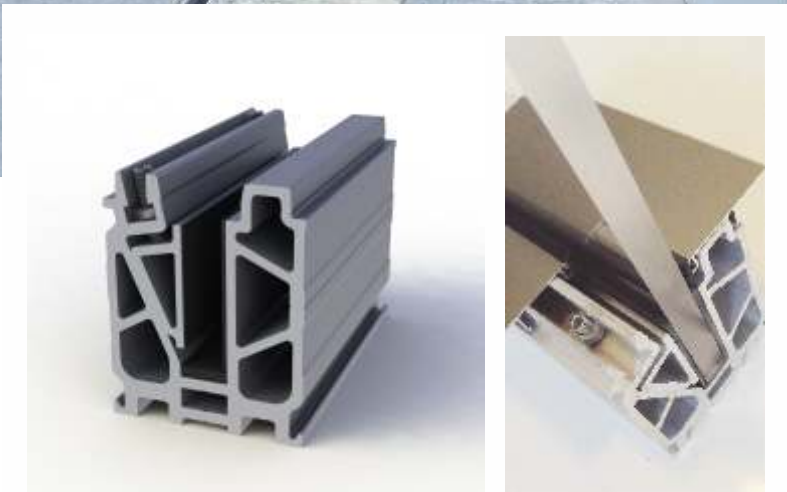
①



②



③



## Type B

Code	Dimension	Weight	Description
GC-B0-15-0	86X110	1,30 kg/pcs	max.16 mm glass
GC-B0-20-0	86X110	1,85 kg/pcs	max.16 mm glass
GC-B0-30-0	86X110	2,58 kg/pcs	max.16 mm glass

### Type B

- In Floor glass supporting system
- Glass of 16 mm thickness is available.
- Adjustment of the glass positioning
- Easy to assemble



④



⑤



⑥



**GC-A0-15-0**

On Floor Glass Channel Profile (15 cm)



**GC-B0-15-0**

In Floor Glass Channel Profile (15 cm)



**GC-A0-20-0**

On Ground Glass Channel Profile (20 cm)



**GC-B0-20-0**

In Floor Built-in Glass Channel Profile (20 cm)



**GC-A0-30-0**

On Floor Built-in Glass Channel Profile (30 cm)



**GC-B0-30-0**

In Floor Built-in Glass Channel Profile (30 cm)



**GC-AC-00-P0**

On Floor Glass Channel Profile Cover (1 m)



**GC-BC-00-P0**

In Floor Glass Channel Profile Cover (1 m)



**GC-AC-01-P0**

Glass Glass Channel Profile Plug



**GC-BC-01-0**

Glass Channel Rail Profile (1 m)



**GC-G0-00-0**

Glass Channel Profile Gasket (1 m)



**GC-H1-XX-P0**

Glass Railing Sideways Connection Kit



**GC-H2-XX-P0**

Glass Railing Sideways Connection Kit



**GC-S1-XX-P0**

Glass Railing Sideways Connection Kit



**GC-S2-XX-P0**

16-20 mm Glass Railing Sideways Connection Kit



**GC-S3-XX-IN**

16-20 mm Glass Railing Sideways Connection Kit Inox



**GC-E1-60-P0**

25x60 90° Cornering  
Kit With Ring



**GC-E2-80-P0**

30x80 90° Cornering  
Kit With Ring



**GC-C1-50-P0**

Glass Channel Tube  
Plug of 50



**GC-C2-60-P0**

30x60 Glass Channel Profile  
Plug



**GC-C3-80-P0**

30x80 Glass Channel Profile  
Plug



**GC-F1-60-P0**

25x60 Square 4 Holed  
Pipe Flange



**GC-F2-60-P0**

25x60 Glass Channel 2 Holed  
Wall Flange



**GC-F3-60-P0**

25x60 2 Holed Wall Flange



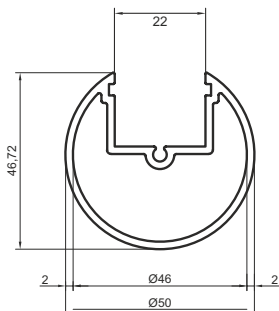
**GC-F4-60-P0**

25x60 2 Holed Wall Flange

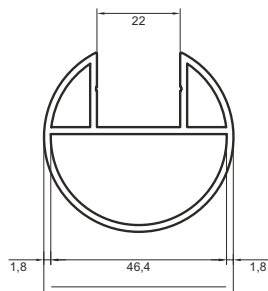


**GC-F5-60-P0**

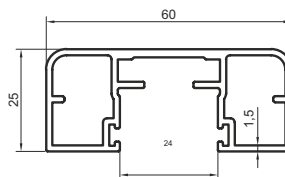
25x60 2 Holed Glass Channel  
Wall Flange



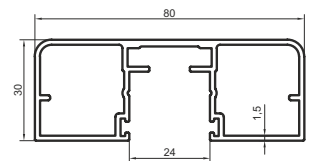
**GC-P20-50-P0**



**GC-P18-50-P0**



**GC-P0-60-P0**



**GC-P0-80-P0**



[www.tgpsystems.com](http://www.tgpsystems.com)