

**Description**

- TGP Forza Elite 3D hinge is the ideal solution for high quality PVC doors.
- Right hand and left hand applicable.
- The plastic adjustmen parts can be used between hinge and profile to have additional 3 mm upstand.
- Available colours are RAL 9016, RAL 8022, RAL 8017 and RAL 8003.
- Adjustments

Sealing Pressure : + - 1,5 mm  
 Height : + 3 mm  
 Horizontal : - 5 mm + 10 mm

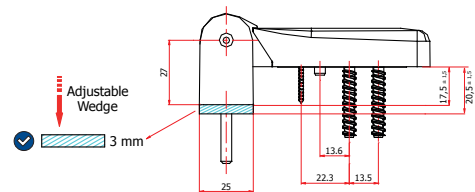
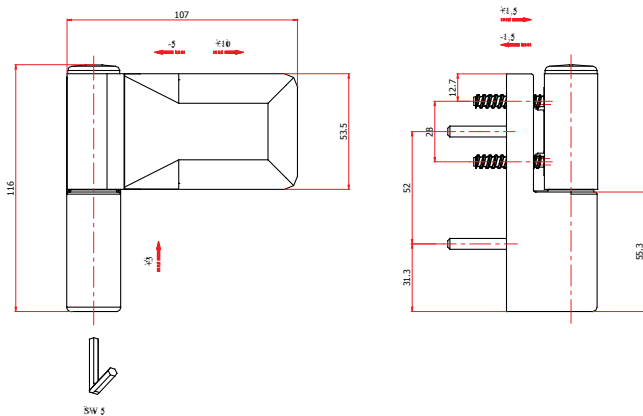
**Technical Data**

Load Capacity : 160 kg  
 Hinge Size : 107 mm

**Material Specification**

Sash&Frame Parts : Zinc die cast Z13 to BS 1004  
 Mounting Parts : High quality industrial plastic  
 Pin : Stainless steel  
 Finish : Powder coated

**Technical Drawing**



**TGP Forza Elite 3D Adjustable Door Hinge**

PG	Code	Description	
T0	T-00316-45-0-5	RAL 8022	24
T0	T-00316-45-0-55	RAL 8017	24
T0	T-00316-11-0-56	RAL 8003	24
T0	T-00316-11-0-7	RAL 9016	24

PG	Code	Description	
T0	T-18920-00-0-0	Jig	1

