

**Description**

- Multipoint door locks has multiple locking points which simultaneously lock into place through the action of a continuous travel drive gear. This drive gear is usually activated by lifting the door handle.
- Locking is done by turning the handle upwards after that turning the key. The handle goes back to horizontal position.
- Focus2 multipoint door lock series are with deadbolt.
- The latch is reversible. Easy to change on left or right.

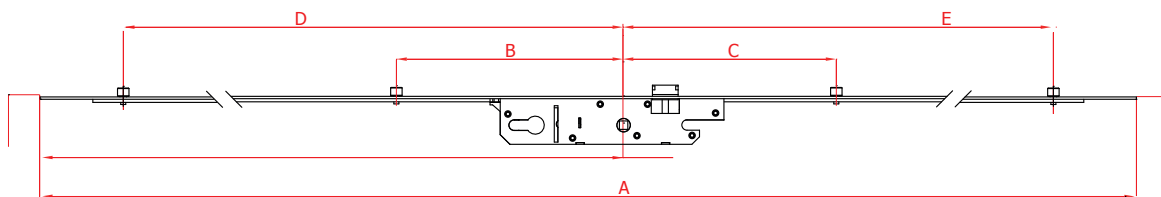
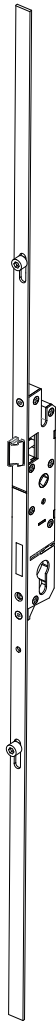
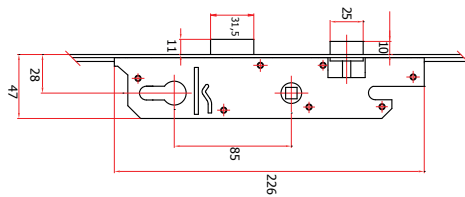
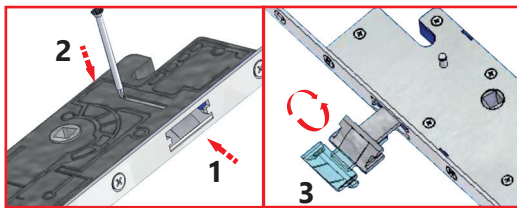
**Technical Data**

Operation : Handle  
 Pz (mm) : 85  
 Backset (mm) : 28  
 Faceplate (mm) : 16

**Material Specification**

Case : Steel and industrial plastic  
 Latch : Zinc acc EN 1743-2 / zinc plated  
 Deadbolt : Zinc acc EN 1743-2 / zinc plated

**Technical Drawing**



**TGP Focus2 Lockable Door Gear, Handle Operated, with deadbolt, 28 / 85**

PG	Code	A	B	C	D	E		
T3	T-30006-16-0-1	1600	300	-	806	624	3	10
T3	T-30006-18-0-1	1800	300	308	806	824	4	10
T3	T-30006-20-0-1	2000	300	308	865	885	4	10

PG	Code	Dimension	Description
T56	T-56000-10-0-1	100 mm	TGP Profile Cylinder, Brass, 6+6 Brass pins, 3 pcs brass computer keys, 1 pcs antidrill bar.
T56	T-56000-90-0-1	90 mm	
T56	T-56000-80-0-1	80 mm	

