

Description

- Multipoint door locks has multiple locking points which simultaneously lock into place through the action of a continuous travel drive gear. This drive gear is usually activated by lifting the door handle.
- Locking is done by turning the handle upwards after that turning the key. The handle goes back to horizontal position.
- Focus2 multipoint door lock series are with deadbolt.
- The latch is reversible. Easy to change on left or right.

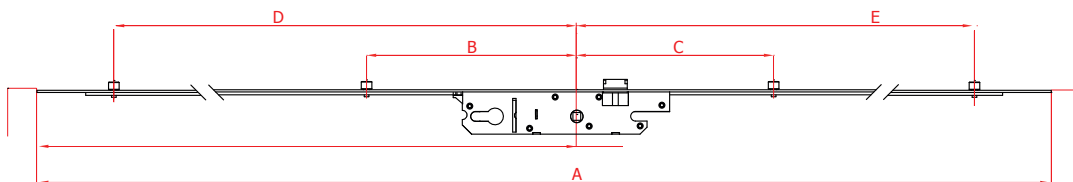
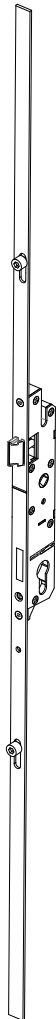
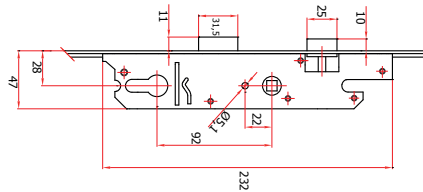
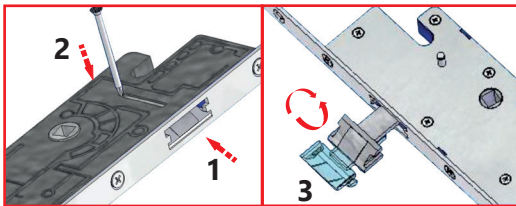
Technical Data

Operation : Handle
 Pz (mm) : 92
 Backset (mm) : 28
 Faceplate (mm) : 16

Material Specification

Case : Steel and industrial plastic
 Latch : Zinc acc EN 1743-2 / zinc plated
 Deadbolt : Zinc acc EN 1743-2 / zinc plated

Technical Drawing



TGP Focus2 Lockable Door Gear, Handle Operated, with deadbolt, 28 / 92

PG	Code	A	B	C	D	E		
T3	T-30007-16-0-1	1600	300	-	806	624	3	10
T3	T-30007-18-0-1	1800	300	308	806	824	4	10
T3	T-30007-20-0-1	2000	300	308	865	885	4	10

PG	Code	Dimension	Description
T56	T-56000-10-0-1	100 mm	TGP Profile Cylinder, Brass, 6+6 Brass pins, 3 pcs brass computer keys, 1 pcs antidrill bar.
T56	T-56000-90-0-1	90 mm	
T56	T-56000-80-0-1	80 mm	

