

- Special designed lock suitable for aluminum euro groove doors.
- Locking is done by turning by the handle.
- The latch is reversible. Easy to change on left or right.

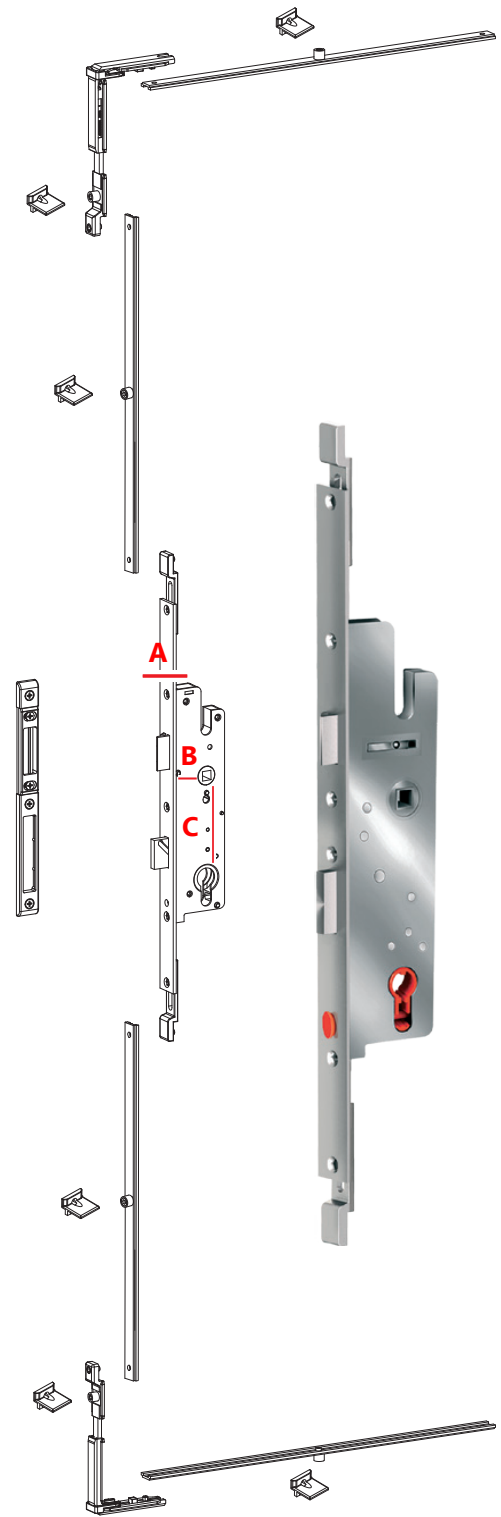
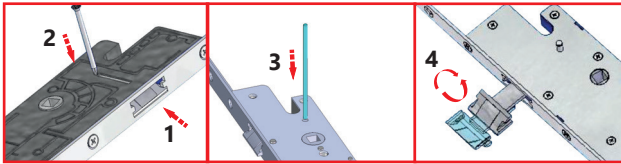
Technical Data

Operation : Handle
 Pz (mm) : 85mm / 92mm
 Backset (mm) : 25mm - 28mm - 35mm
 Faceplate (mm) : 23

Material Specification

Case : Steel and Plastic
 Latch : Zinc acc EN 1743-2 / zinc plated
 Deadbolt : Zinc acc EN 1743-2 / zinc plated

Technical Drawing



Handle Operated Lock for Aluminum Door

| PG | Code | A | B | C | |
|-----|-----------------|----|----|----|----|
| T61 | T-61201-85-25-1 | 23 | 25 | 85 | 10 |
| T61 | T-61201-85-28-1 | 23 | 28 | 85 | 10 |
| T61 | T-61201-85-35-1 | 23 | 35 | 85 | 10 |
| T61 | T-61201-92-25-1 | 23 | 25 | 92 | 10 |
| T61 | T-61201-92-28-1 | 23 | 28 | 92 | 10 |
| T61 | T-61201-92-35-1 | 23 | 35 | 92 | 10 |